

UHMW-PE fender face pads

UHMW-PE fender face pads (or sliding plates) are the best material available for fender panels which has very low friction coefficient, impact resistance, high abrasion resistance, UV and ozone resistance and allow the vessels to move smoothly past a fender system.

UHMW-PE is molded into plates at high pressure and available in many sizes and thicknesses. The raw plates can be cut, machined and drilled to suit any type of panel.

Features

- Easy to install
- Available in different color and several quality grades
- Does not rot, split or decay
- Recyclable
- Available in many other colors if required.

APPLICATIONS

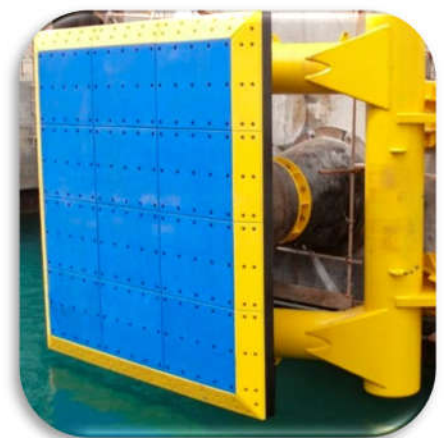
- Fender panel (frame) face pads
- Rubbing strips
- Leg-fender shields
- Lock entrance and wall protection
- Bridge buttress protection
- Beltings on workboats



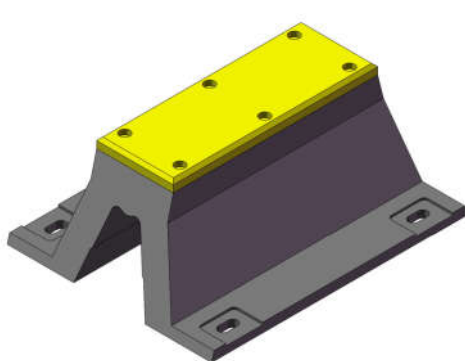
Cone-Fender Pad



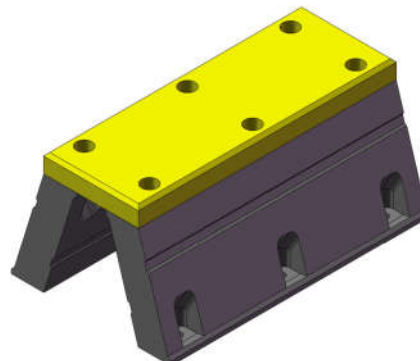
Cell-Fender Pad



Parallel-Motion-Fender Pad

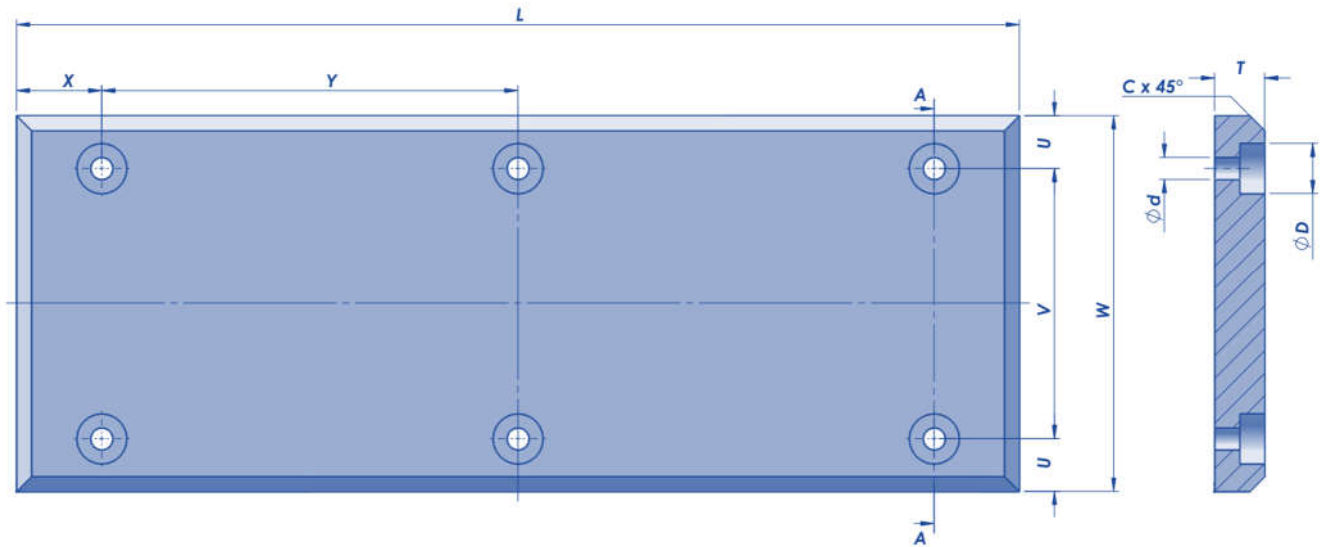


Super Arch-Fender Pad(SAP)



Leg-Fender Pad (LP)

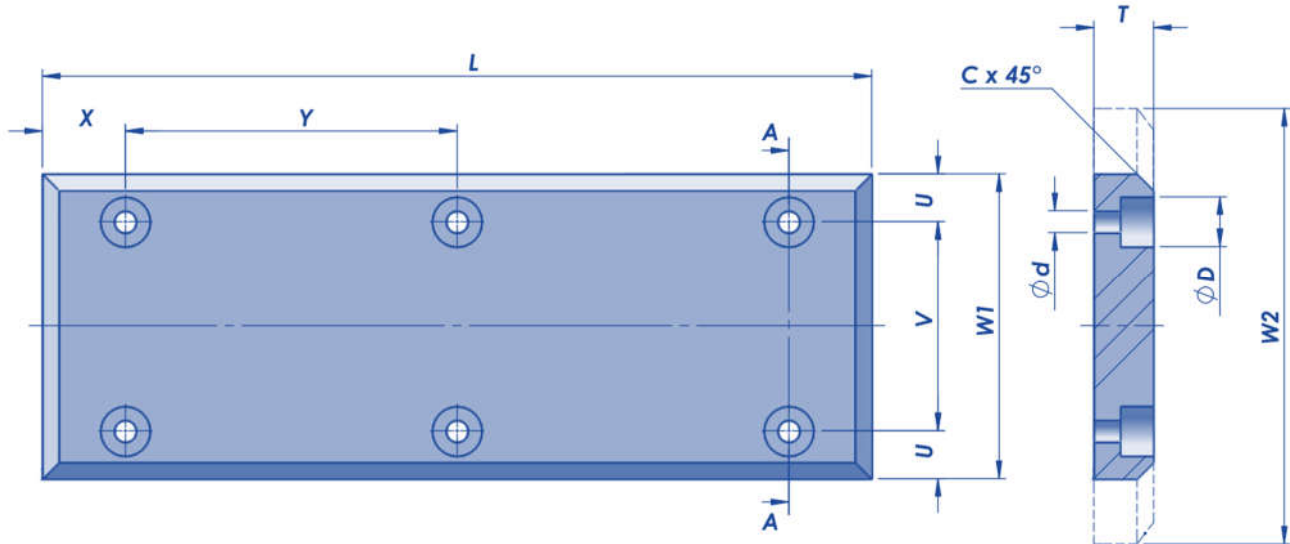
UHMW-PE FACE PADS FOR ARCH FENDER



MODEL NO.	W	U	V	X	Y	T	BOLT SIZE	d	D	C	L
SAP150H	112	56	0	60-70	330-410	30	M12	13	30	10	1000
SAP200H	150	35	80	60-70	330-410	30	M16	18	40	10	1500
SAP250H	187	36	115	70-85	330-415	30	M16	18	40	10	2000
SAP300H	225	37.5	150	70-85	330-415	40	M16	18	40	15	2500
SAP400H	300	50	200	70-85	330-415	40	M20	22	50	15	3000
SAP500H	375	52.5	270	70-85	330-415	50	M20	22	50	15	3500
SAP600H	450	55	340	70-85	330-415	50	M24	27	60	15	
SAP800H	600	60	480	70-85	330-415	60	M30	33	75	20	
SAP1000H	750	75	600	70-85	330-415	60	M30	33	75	20	
All the dimensions can be customized , please fill your dimensions.											[Units:mm]

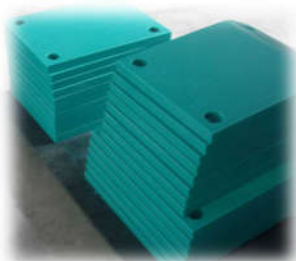
MODEL NO.	W	U	V	X	Y	T	BOLT SIZE	d	D	C	L
AP150H	98	49	0	60-70	330-410	30	M16	18	40	10	1000
AP200H	130	65	0	60-70	330-410	30	M16	18	40	10	1500
AP250H	163	45	73	70-85	330-410	30	M16	18	40	10	2000
AP300H	195	50	95	70-85	330-410	40	M16	18	40	15	2500
AP400H	260	60	140	70-85	330-410	40	M16	22	50	15	3000
AP500H	325	65	195	70-85	330-410	50	M20	22	50	15	3500
AP600H	390	65	260	70-85	330-410	50	M20	22	50	15	
AP800H	520	70	380	70-85	330-410	60	M24	27	60	20	
AP1000H	650	80	490	70-85	330-410	60	M24	27	60	20	
All the dimensions can be customized , please fill your dimensions.											[Units:mm]

UHMW-PE FACE PADS FOR LEG FENDER



MODEL NO.	W1	W2*	U	V	X	Y	T	BOLT SIZE	d	D	C	L
LP300H	270	410	49	172	150	300	70	M20	22	50	20	600-1500
LP400H	360	550	64	232	125/250	500	80	M24	27	60	20	750-3000
LP500H	460	670	72	316	125/250	500	90	M30	33	75	25	750-3000
LP550H	500	750	90	320	125/250	500	90	M30	33	75	25	750-1500
LP600H	530	840	104	322	125/250	500	90	M30	33	75	25	750-1500
LP700H	640	960	117	406	125/250	500	100	M30	33	75	25	750-1500
LP750H	680	1040	120	440	125/250	500	100	M36	39	85	25	750-1500
LP800H	730	1100	125	480	125/250	500	100	M36	39	85	25	800-2000
LP1000H	900	1370	160	580	150-350	500	120	M42	46	100	25	800-2000
LP1250H	1140	1710	208	724	150-375	500	120	M48	52	115	25	800-2000
LP1450H	1300	2000	234	832	200-350	500	140	M48	52	115	25	900-2000
LP1600H	1460	2200	250	960	250-350	500	160	M56	62	130	25	1000-2000

All the dimensions can be customized , please fill your dimensions. W2* is widened [Units:mm]

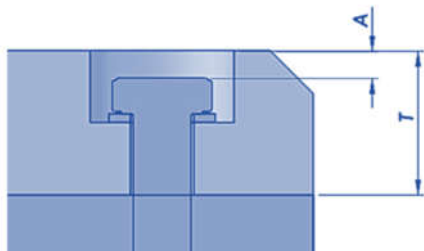


PHYSICAL AND MECHANICAL PROPERTIES OF UHMW-PE PADS

PROPERTY	TEST METHOD	UNIT	TYPICAL VALUE	
			VIRGIN	REGENERATED
Density	ISO 1183, GB/T 1033(ASTM D792)	g/cm ³	0.93 – 0.95	0.94-0.96
Molecular Weight	Viscometric	g/mol	≥4 × 10 ⁶	≥3 × 10 ⁶
Friction Coefficient	ISO 8295,GB/T10006(ASTM D1894)	---	0.15-0.20	0.15-0.20
Yield Strength	ISO 15527, GB/T 1040(ASTM D638)	N/mm ²	15-20	15-20
Breaking Strength	ISO 15527, GB/T 1040(ASTM D638)		≥30	≥25
Elongation at Break	ISO 15527, GB/T 1040(ASTM D638)	%	≥50	≥50
Abrasion Index (Sand-slurry)	ISO 15527, GB/T 1040(ASTM D638)	-	~100	130-150
Impact Strength (with V-notch)	ISO 11542-2,GB/T 1843(ASTM D256A)	kJ/m ²	≥130	≥70
Hardness	ISO 868 / GB/T 2411(ASTM D2240)	Shore D	61-63	63-66
Operating Temperature	-	°C	-100 to +80	-100 to +80
Thermal Expansion	ISO 11359-2/GB/T 36800.2(ASTM D696-03)	K ⁻¹	≈ 2 × 10 ⁻⁴	≈ 2 × 10 ⁻⁴
Melting Point	ISO 11357-3, GB/T 19466.3(ASTM D3418)	°C	133 – 137	133 – 137

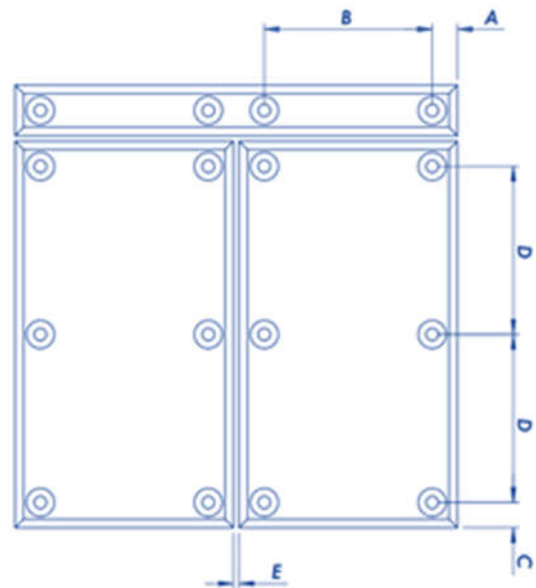
Actual properties need to be confirmed by order.
The above properties need to be tested by manufacturer or third party testing laboratory.

WEAR ALLOWANCES



APPLICATION	T	A	Bolt size
Light duty	30	3-5	M12-M16
Medium duty	40	7-10	M16-M20
	50	10-15	
Heavy duty	60	15-19	M24-M30
	70	18-25	
Extreme duty	80	22-32	M30-M36
	90	25-36	
	100	28-40	

DIMENSIONS



A	B	C	D	E
45-85	250-350	45-80	300-450	5-10

